

Geneva Advantage

December 2010

IN THIS ISSUE:

Find out about the annual training updates

See a sample of the temporary jobs we have available

Find out which Trusts we are now Preferred Suppliers for

Festive Shortbread Logs - our delicious Christmas recipe

WELCOME to the fifth issue of Geneva Advantage. As a Geneva Agency Nurse or HCA you will receive this newsletter every two months.



*We wish all our readers
a Merry Christmas
and
a Happy New Year 2011*



HOW TO FIND ACCOMODATION IN LONDON

Below you can find the most popular accommodation sites for flat share property and accommodation rental in London.

www.spareroom.co.uk

www.uk.easyroommate.com

www.letalife.com

www.gumtree.com



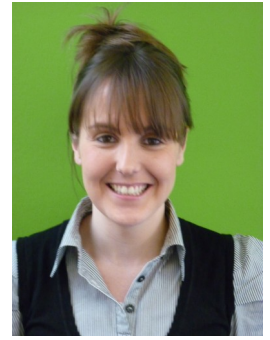
Taneal Dalton
Temporary Service Manager



Sian Dodunski
Sourcing Team Leader



Lisa Pollock
Sourcing Consultant



Laura Douse
Bookings Consultant



Harleen Sahni
Bookings Consultant



Dan Shapland
Bookings Consultant



Hafsa Kahn
Payroll Team Leader



Joan Flowers
Payroll Assistant

FAREWELL

This month we have sadly said goodbye to our Marketing Coordinator **Bronwyn Walton**. We thank her for all her hard work and wish her all the best for the future!

Agata Olewinska is her new replacement. If you have any marketing queries going forward please contact her by emailing:

agatao@genevahealth.co.uk.

? QUESTIONS:

If you have a question you would like answered in the next issue of Geneva Advantage email it: **genevaadvantage@genevahealth.co.uk**

We will be happy to help!

 **ANNUAL UPDATE**

As you are aware, annual training updates are a mandatory requirement to maintain your Geneva Health compliance. Your minimum annual training includes:

- **Basic Life Support**
 - **Manual Handling**
 - **Health & Safety (and additional updates)**
 - **POVA and POCA**
- *Some of you may have additional annual updates dependant on the areas you work.*

Depending on when some of you completed various components of this training, you may currently have several dates throughout the year for updates. In order to try to streamline your training update into a maximum of two sessions per year, you may notice some of your training dates being moved to accommodate this.

I will be in contact with you personally when your training is due for renewal.

Jackie, Operations Manager

CHRISTMAS SHORTBREAD LOG RECIPE

Ingredients:

- 1 cup butter, softened
- 1/2 cup confectioners' sugar
- 1 teaspoon vanilla extract
- 2 cups all-purpose flour
- 1 1/2 cups chocolate chips
- 4 teaspoons shortening
- 3/4 cup ground walnuts

Directions:

1. In a mixing bowl, cream together the butter and sugar. Add vanilla. Gradually add flour; mix well.

2. With lightly floured hands, shape tablespoonfuls into 2-in. logs. Place on ungreased baking sheets. Bake at 180 degrees F for 9-11 minutes or until edges are lightly browned. Cool for 2-3 minutes before removing to wire racks.

3. In a microwave-safe bowl, melt chocolate chips and shortening; stir until smooth. Drizzle chocolate over half of the cookies. Dip one end of cookies into chocolate, then sprinkle with walnuts.

PERMANENT POSITIONS

National Society for Epilepsy
Epilepsy Specialist Nurse

Sussex Health Care
Deputy and Home Managers

Benefits include: Excellent training and development on offer

Phone: 0207 061 1946

Email: op@genevahealth.co.uk

National Hospital for Neurology and Neurosurgery

Band 5 and 6 RN's for Hyper Acute Stroke unit, Neurosurgical wards and brand new Brain Tumour Unit opening in Jan 2011

The Portland Hospital

Paeds / PICU and Theatre Nurses

Excellent benefits with our Private and NHS clients include:

Competitive salaries, Accommodation assistance, Training and professional, development opportunities, Season ticket loans, and Healthcare schemes

London Bridge Hospital

ITU, Oncology, Cardiac & Angiography nurses

Chelsea & Westminster

Experienced Neonatal Intensive Care nurses

The Wellington Hospital

Neuro Rehab and Theatre Staff Nurses

Phone: 0207 025 0095



MARKET WATCH

In last months Temp Watch we mentioned just a few of the Trusts across London where we have been given Preferred Supplier Status. We are pleased to announce that November saw the kick off of the Imperial NHS Trust Campaign whereby we finalised our agreement with Imperial College Healthcare NHS Trust for a Tier 1 supply. We are now a preferred supplier to St Mary's, Hammersmith, Charring Cross, The Western Eye Hospital and The Queen Charlotte and Chelsea Hospitals.

Imperial College Healthcare NHS Trust also launched their online timesheet system in November. We apologise for the 'teething problems' some of you may have experienced over the past few weeks with this new system going live. We are working closely with Imperial NHS Trust to resolve these issues as quickly as possible to provide a more efficient and smooth process for your booked and paid shifts.

Please call us to find out when we can book you in!

A few points of interest about Imperial College Trust for your information...

Imperial College Trust is a Foundation Trust which is one of the few Trusts whose patrons get to have input as to how the Trust is run. The 1st December 2010 saw the opening of a 16 bed Major Trauma Centre at St Mary's Hospital. This centre has at it's disposal some of the most advanced theatre equipment in the UK. The Trust has 1 of 5 biomedical research centres in the UK, looking forward to ground breaking research. 10 of the Trust's Consultants have been named as leaders in each of their specialist fields.

TEMPORARY POSITIONS

Temporary Division has a variety of positions available for nurses. Our clients are some of the largest and most prestigious NHS Hospital and private care providers and offer excellent training and benefits packages. Checkout jobs in London from top employers in the Nursing Sector.

Imperial College London:

Oncology Nurses for areas of specialist work

Kensington & Chelsea; Private Nursing Home

Eldercare Nurses

Eldercare & Palliative care Nurses:

North London Charity Hospice

Palliative Care Nurses

Sussex Health Care:

Staff Nurses.

If you want the flexibility and higher pay rates that Temporary or Agency Nursing brings, Geneva Health can help you. Our specialist Agency Nursing team can find you temporary work on a full time or part time basis, from ad-hoc shifts to long term lines of work.